

## Supporting Information

### **Ephedrate A, a new phenol compound from the root of *Ephedra sinica***

ZHONG Ying<sup>1</sup>, YOU Yuzhuo<sup>1</sup>, HUANG Lishan<sup>1</sup>, FU Jun<sup>1</sup>, XIAO Zimin<sup>1</sup>, ZHU Yongyan<sup>1,2\*</sup>, TAO Huaming<sup>1,2\*</sup>

<sup>1</sup>*School of Traditional Chinese Medicine, Southern Medical University, Guangzhou 510515, China;*

<sup>2</sup>*Guangdong Provincial Key Laboratory of Chinese Medicine Pharmaceuticals, Guangzhou 510515, China;*

### **List of supporting information**

**Figure S1.** <sup>1</sup>H NMR spectra of compound **1** in CDCl<sub>3</sub>

**Figure S2.** <sup>13</sup>C NMR spectra of compound **1** in CDCl<sub>3</sub>

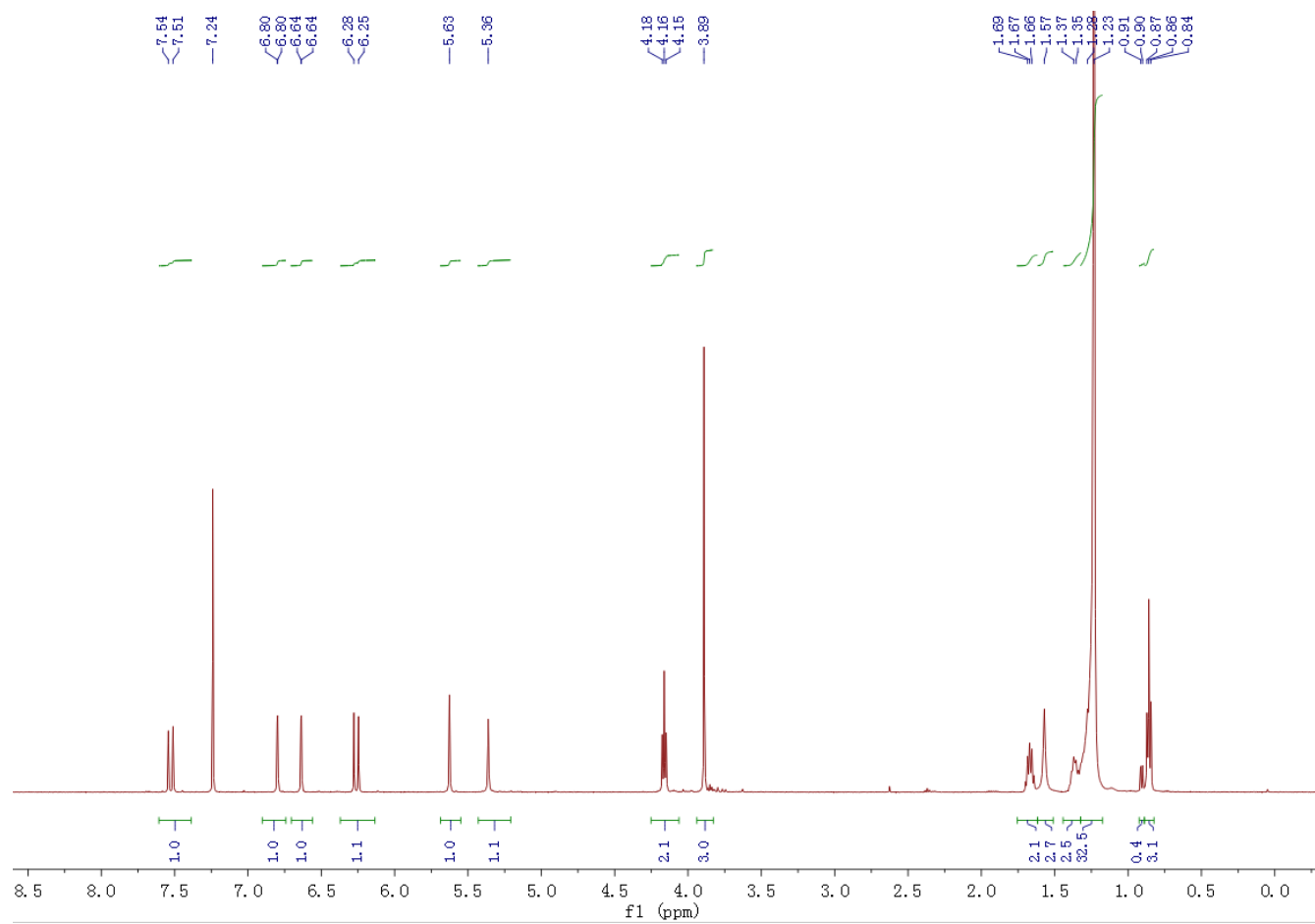
**Figure S3.** HSQC spectra of compound **1** in CDCl<sub>3</sub>

**Figure S4.** HMBC spectra of compound **1** in CDCl<sub>3</sub>

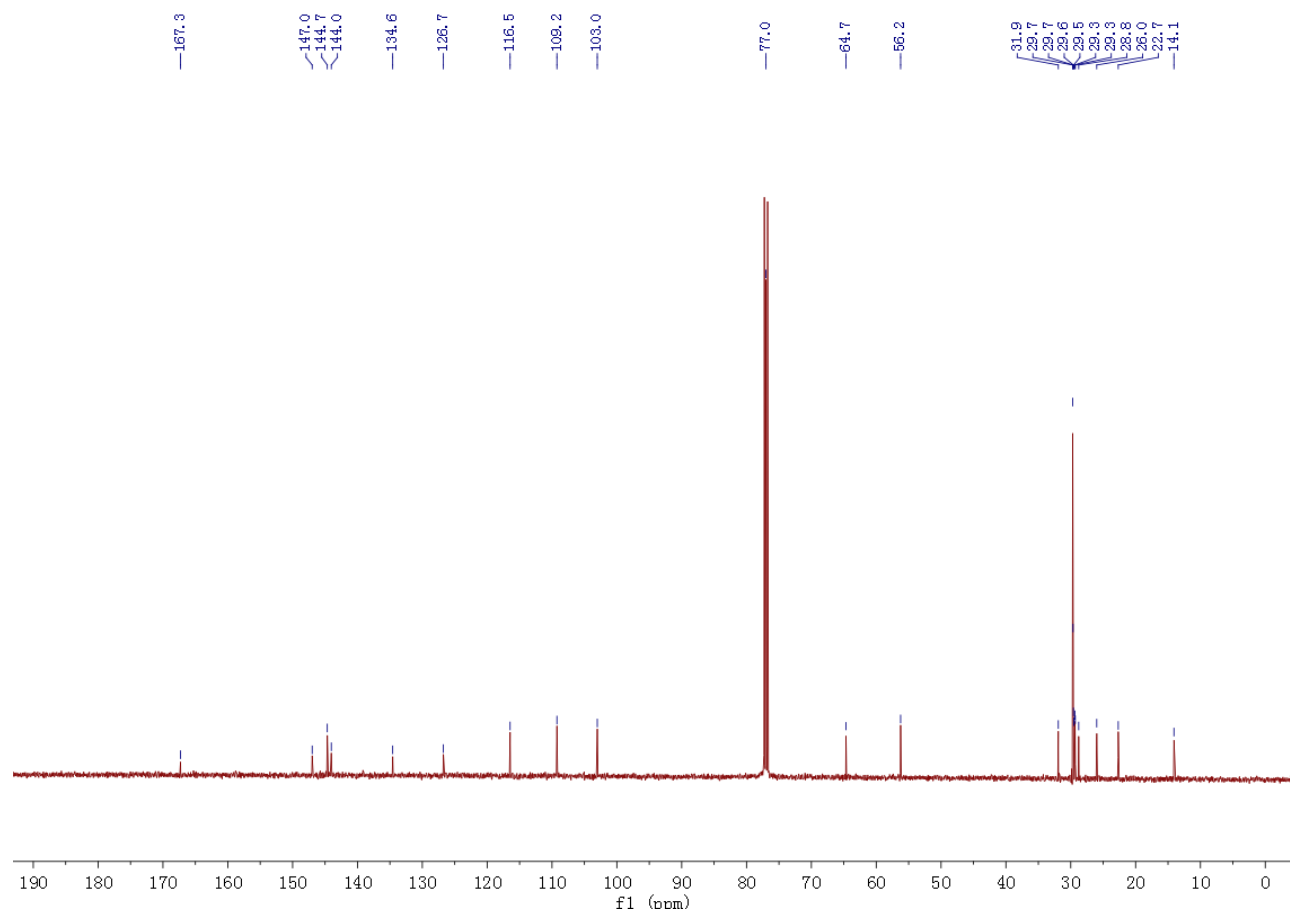
**Figure S5.** HRESIMS spectrum of compound **1**

---

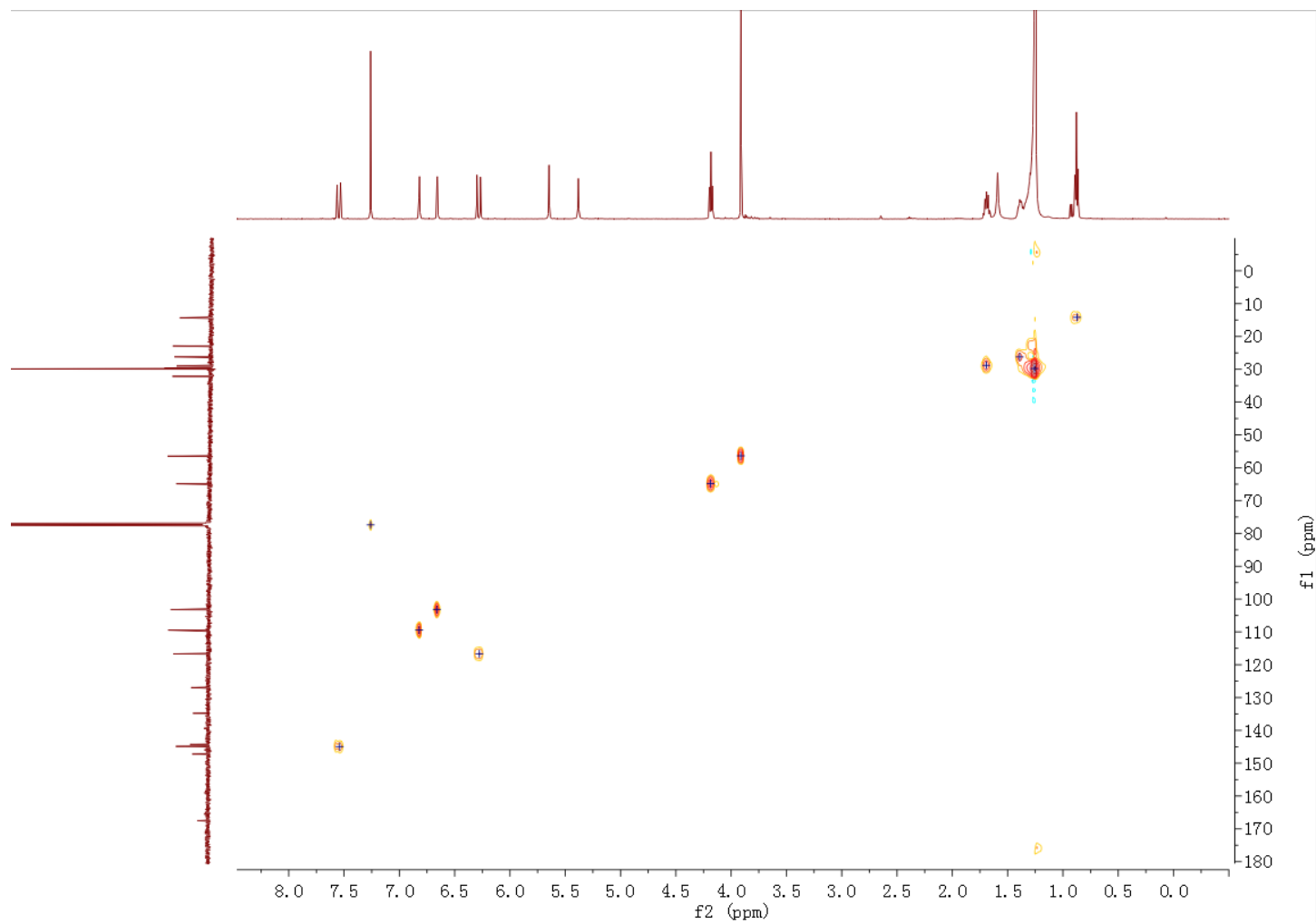
[\*Corresponding authors] E-mail: yongyanzhu0521@163.com (ZHU Yongyan); taohm@smu.edu.cn (TAO Huaming).



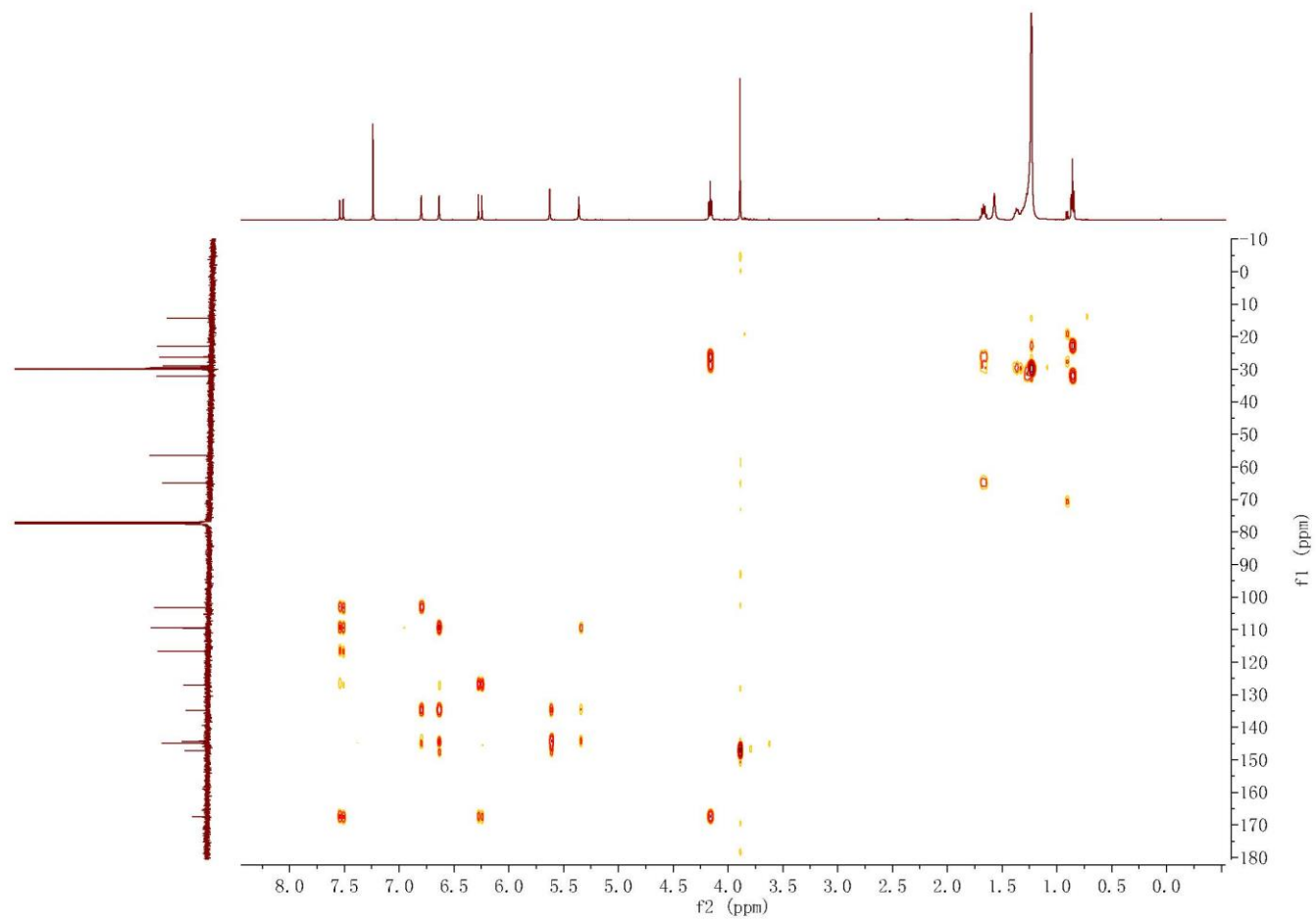
**Figure S1.**  $^1\text{H}$  NMR spectra of compound **1** in  $\text{CDCl}_3$



**Figure S2.**  $^{13}\text{C}$  NMR spectra of compound **1** in  $\text{CDCl}_3$



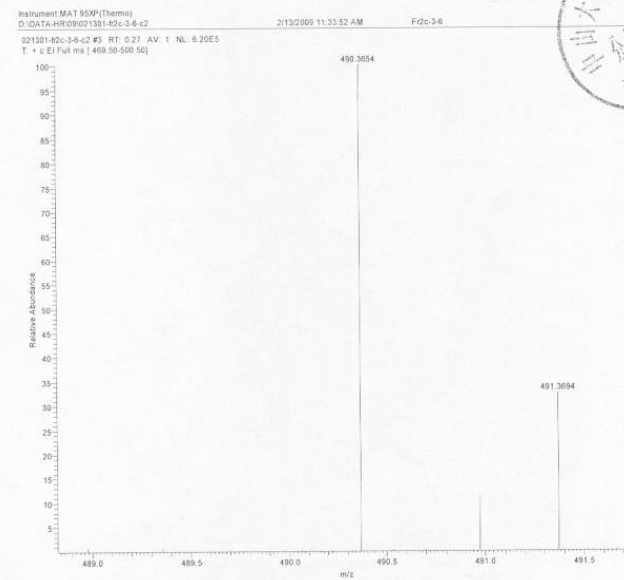
**Figure S3.** HSQC spectra of compound **1** in CDCl<sub>3</sub>



**Figure S4.** HMBC spectra of compound **1** in CDCl<sub>3</sub>

SPECTRUM - MS  
File : D:\DATA-HR\09\021301-fr2c-3-6-c2.RAW  
Full ms [469.500 - 500.500] - Range: 490.000 - 491.000  
Scan No. 3 of 11  
Scan #: 3  
RT: 0.27  
Data points: 1

Mass	Relative Intensity	Theoretical Mass	Delta [ppm]	Delta [mmu]	RDB	Composition
490.3654	100.0	490.3653	0.2	0.1	6.0	C <sub>30</sub> H <sub>50</sub> O <sub>5</sub>



**Figure S5.** HRESIMS spectrum of compound **1**